

[www.hamiltonwatch.com](http://www.hamiltonwatch.com)

A COMPANY OF THE **SWATCH GROUP**

Printed in Switzerland

H860.000.039

M 039

**HAMILTON**  
AMERICAN SPIRIT • SWISS PRECISION



**FACE 2 FACE – LIMITED EDITION**  
**INSTRUCTION MANUAL**

**Automatic caliber ETA 2094**  
Please refer to the general user's manual for time setting and using instructions.

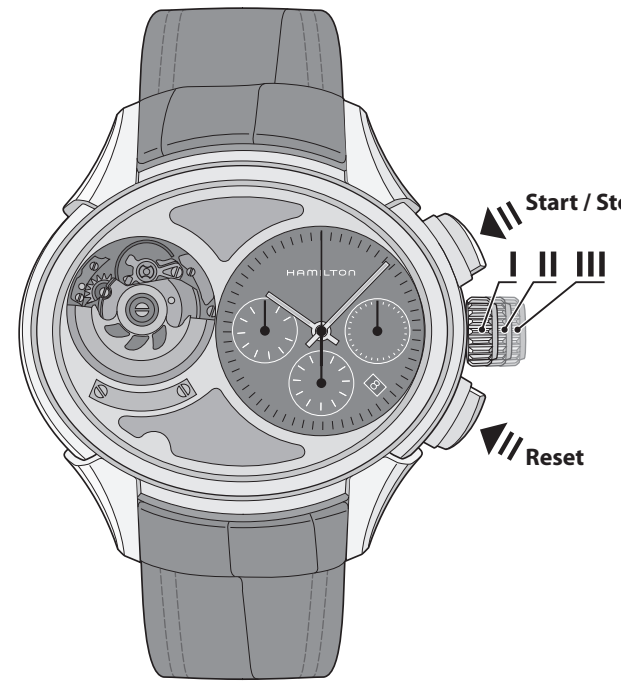
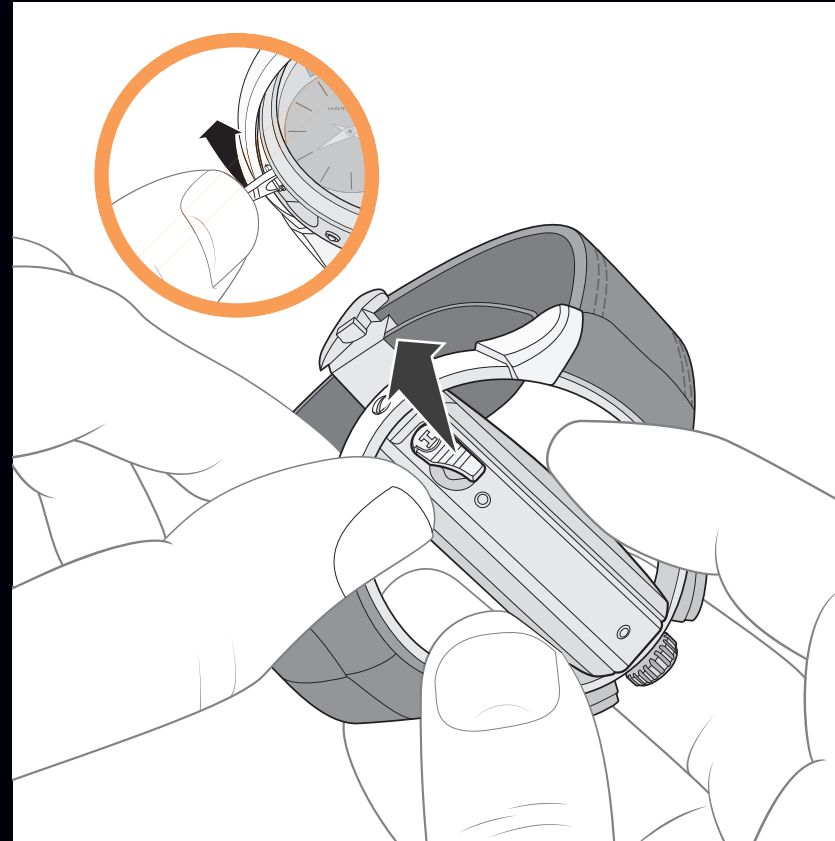
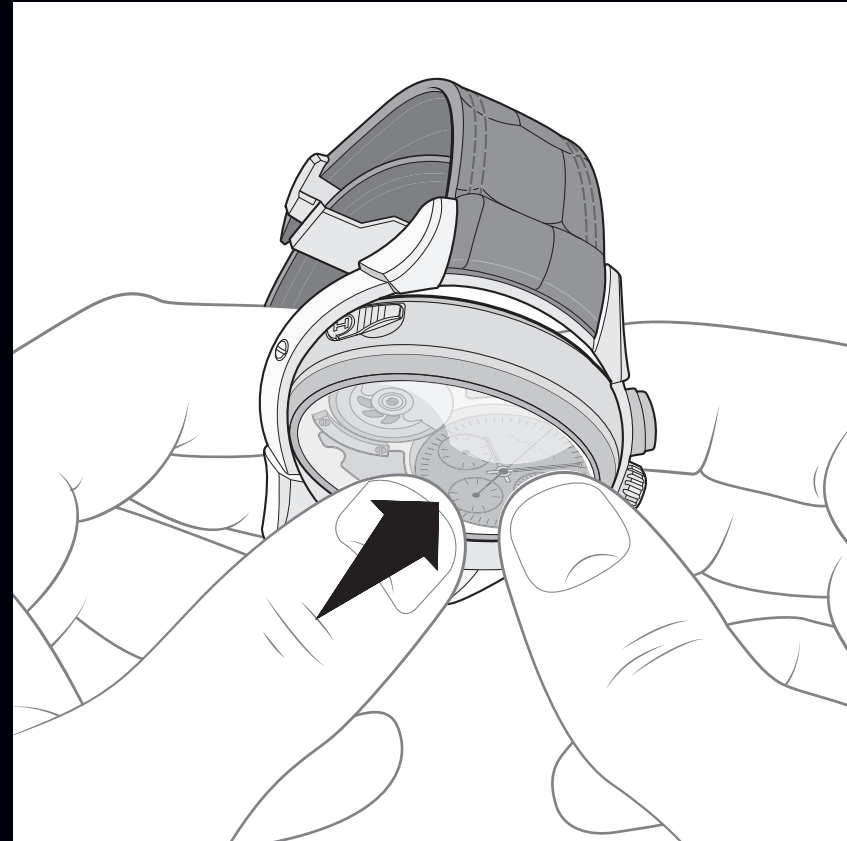


Diagram illustrating the functions of the chronograph pushers on the right side of the watch case:

- Start / Stop**: Indicated by three upward-pointing arrows.
- Reset**: Indicated by three downward-pointing arrows.



**Automatic caliber ETA 2671**  
Please refer to the general user's manual for time setting and using instructions.

> Manual winding

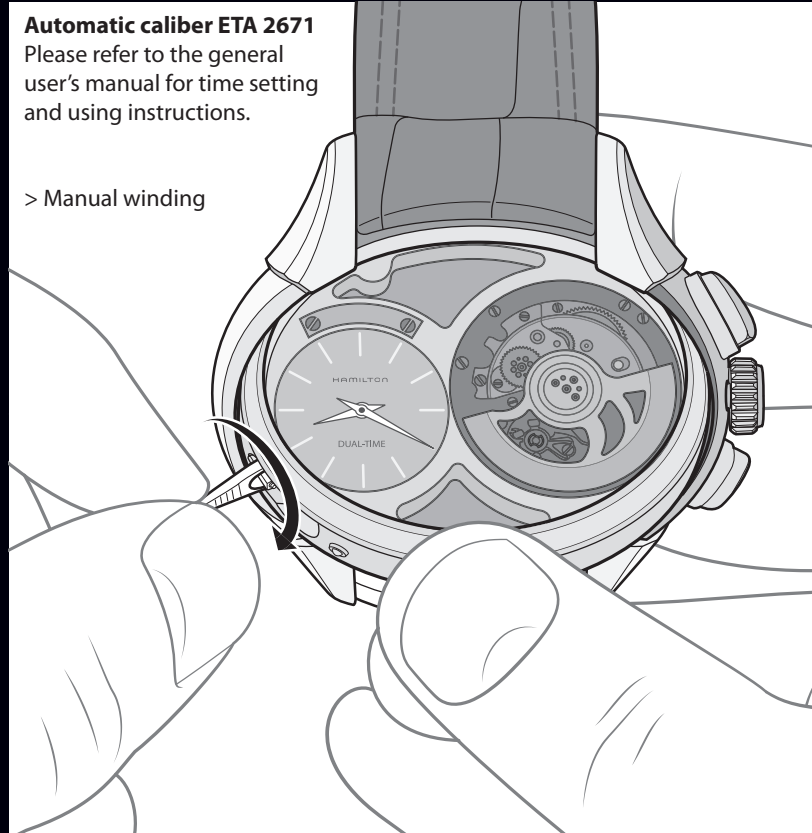


Diagram illustrating the first step of manual winding: pulling the crown outwards.

